

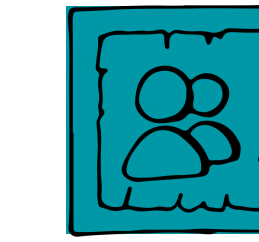
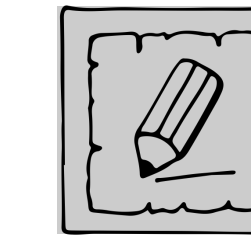
# LD4P

## Linked Data for Production

# Linked Data For Production 2: Pathway To Implementation

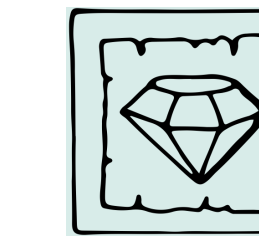
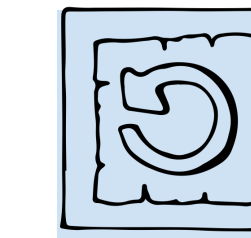
## Implementing a prototype environment from metadata creation to discovery

**Develop a cloud-based environment** for the library community to create, access, adopt, and implement linked data



**Create policies** for adoption by the community that promote best practices for transitioning to and implementing linked data

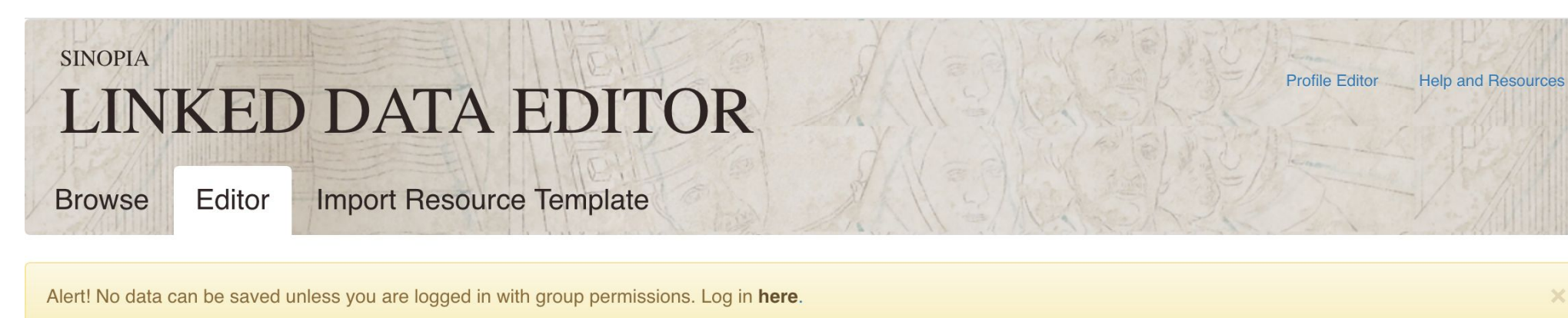
**Increase efficiency** of workflows for metadata creation by pooling and leveraging data already developed and available by numerous national libraries around the globe



**Enhance discovery** of library materials

## Sinopia metadata editor

Shared, cloud-based environment developed & hosted by Stanford, based on Library of Congress's BIBFRAME Editor and Profile Editor



**Finding and linking external resources**  
Lookups to Wikidata, ISNI, and other linked data sources from within Sinopia

**Contributing to external resources**  
Creation of global identifiers and descriptions in shared sources outside Sinopia

The collage illustrates the workflow: starting in Sinopia, finding external resources like Wikidata and ISNI, and then contributing back to those external resources. The Wikidata screenshot shows the 'Inland Empire' profile, and the ISNI screenshot shows search results for 'Laura Dern' with various identifiers and names in multiple languages.

## Discovery

**Meeting users where they are, on the web**  
Microdata on item pages to enable machine crawling

**Enhancing a Blacklight discovery platform**  
Knowledge panels  
Semantic search  
Browsing based on authority files and links to related entities in external data



**Linked data** is a shorthand for a collection of web technologies that support data sharing across communities to aid discovery.  
**BIBFRAME** is a data model for bibliographic description developed by Library of Congress, using linked data principles.  
**Wikidata** is a free and open knowledge base that can be read and edited by both humans and machines.  
**ISNI** is an ISO standard for uniquely identifying public identities related to creative works.

## LD4 Partners



## HL ITS staff + timeline

Michelle Durocher  
Naun Chew  
Marc McGee  
Christine Fernsebner Eslao

Amy Armitage  
John Hostage  
Honor Moody

<http://www.ld4p.org/>

